

## Fact Sheet

Peace Resort is 4 stars beachfront property situated on Bophut Beach in the North - East of the island. We refer ourselves as a four stars beachfront friendly bungalow, ideal for relaxing family getaway. Each guest units are built all around nature allows abundant space and privacy to blend harmoniously with green environment.

Accommodations at Peace Resort are designed as contemporary Thai with the architecture under the indigo blue concept to relax and refresh your senses both visually and physically. We have 122 rooms divided into 10 room categories as 86 Bungalows, 16 Pool Villas and 20 Deluxe Rooms in the two floors building.

The turquoise swimming pool with integrated Jacuzzi is the best place to start your quest for total relaxation. There is also smaller dedicated pool for children. If you've worked up an appetite, you can enjoy Thai and International cuisine at the beachfront Sea Wrap restaurant with a large space that spills out onto the beach, cocktail bar is also available. Each option has its own special feeling and we invite you to explore & discover which one is right for you. Little and thoughtful touches subtly and sensibly help you to relax and enjoy just like a family's home.





## Accommodation Categories

### 1. *Deluxe Bungalow*

- 55 units with 42 sqm including front terrace
- 3 Adults or 2 Adults with 1 child

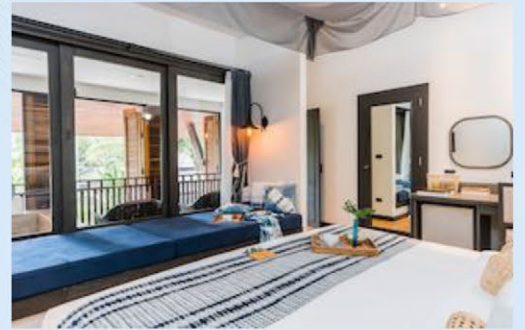
Enjoy total privacy in a lush, landscape garden. These 55 bungalows feature both comfortable living & modern amenities and your private front terrace offers great garden view where tropical trees and local bird surrounding the area.



### 2. *Deluxe Terrace Room*

- 6 units with 38 sqm including front terrace
- Connecting rooms available
- 3 Adults or 2 Adults with 2 Children

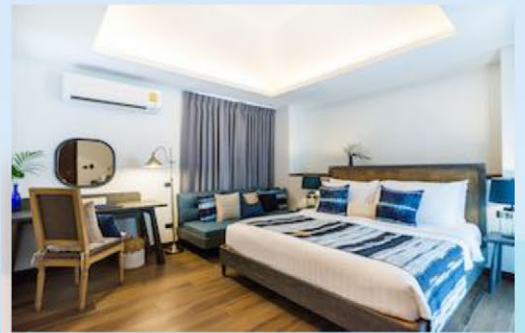
Fresh ocean breezes drift in to awaken you in the morning. Views onto our landscaped gardens enhance the serene ambiance of these rooms. Families can enjoy the extra space afforded with a convertible sofa bed if required. Slip into a heavenly bubble bath for a dreamy evening soak. Appreciate holiday living in these well-equipped rooms. Connecting rooms are also available for your convenience.



### 3. *Premier Villa*

- 31 units with 50-55 sqm including front terrace
- Connecting rooms available
- 3 Adults or Adults with 2 Children

This room type is in the middle area of hotels' property, which takes only 2 minutes' walk to the beach. Premier Villa is offering in two styles with generous living and sleeping space than Deluxe Bungalows. You can enjoy and relish the luxury of your Jacuzzi for a relaxing soak. Also, connecting bungalows are available for family getaways to spread out and enjoy moment together



### 4. *Family Room*

- 4 units with 38 sqm
- Double & Bunk Bed
- 2 adults plus 3 children or 3 adults plus 2 children

Awaken to the sound of nature as the birds sing in the morning sun. Families will enjoy the convenience of a comfy double bed and sturdy bunk beds for little ones. Make memories from dawn till dusk and plan adventures outdoors. After a long day, everyone can refresh in the spacious bathroom and curl up in front of your favorite movie as the stars light the sky. Stay close by with connecting rooms available.





## 5. **Deluxe Plunge Pool**

- 10 units with 70 sqm including plunge pool
- Connecting rooms available
- 3 adults or 2 Adults with 2 Children
- Pool Size 1 x 2.5 x 1.30

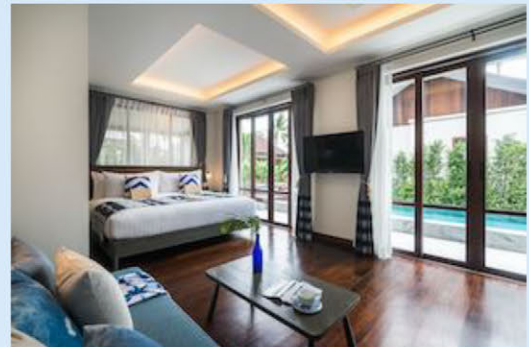
Romance and relaxation await in blissful privacy. Step into airy spaces with island-inspired furnishings. Recline outdoors on your terrace or refresh with a dip in your private plunge pool. Exciting days in the sun turn into elegant evenings with the sensual ocean breeze. Let the comfort of your bed envelop you for a snug nights' sleep. Connecting rooms are available for larger groups or families.



## 6. **Sea Breeze Pool Villa**

- 6 units with 120 sqm including pool
- 3 Adults or 2 Adults with 2 Children.
- Pool Size 3.2 x 8 x 1.30

Feel your cares slip away as you enter these island-inspired havens. Ocean breezes on your private deck ease you into Samui serenity. Ideal for families, these newly refurbished villas allow space for holiday fun inside and out. Play in your private pool and simply laze in the afternoon sun. Experience beach life with all the modern convenience you desire.



## 7. **Two Bedroom Sea Breeze Pool Villa**

- 3 units with 111 sqm including pool
- 5 Adults or 4 Adults with 1 Child
- Pool Size 3 x 6 x 1.30

Located close to the beach, these seaside retreats are perfect for a large group of friends or family on vacation. An aquatic theme runs throughout, enhancing the restful feeling of your break. Everyone sleeps in regal comfort with generous King and Queen sized beds to snuggle up in by night.



## 8. **Two Bedroom Premier Pool Villa**

- 2 units with 145 sqm including pool
- 5 Adults or 4 Adults with 1 Child
- Pool Size 3.2 x 8 x 1.30

Surrender to ultimate relaxation in these newly renovated spacious villas. The gentle sounds of the ocean linger on the breeze as you laze in the glorious sunshine. Dark wooden furniture and oceanic colours decorate the generous spaces inside and out. Your own private pool offers a place for refreshment and outdoor fun. Wash off the day in your shower or bath before retiring to a delightfully comfortable bed.





### 9. Beachfront Pool Villa

- 3 units with 200 sqm including pool
- 3 Adults or 2 Adults with 2 Children
- Pool Size 4 x 8.5 x 1.30

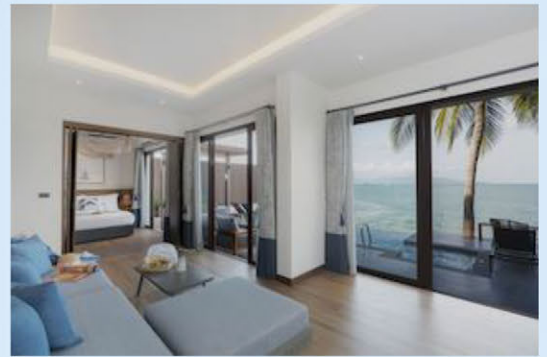
Set right on the beach, these luxurious villas allow you to gaze right out across the Gulf of Thailand. Dine and entertain on your beachfront terrace and drink in horizon views from your infinity edge pool. Enjoy the exclusivity of your own private steam room. Rediscover romance in these newly renovated and calming spaces filled with modern amenities for your convenience.



### 10. Two Bedroom Beachfront Pool Villa

- 1 unit with 131 sqm including pool
- 5 Adults or 4 Adults with 1 Child
- Pool Size 4 x 9 x 1.30

Revel in the exclusivity of these private island villas. Sunlight floods across your private pool for an enchanting holiday setting. Stroll across the golden sands of Bophut Beach right from your wooden terrace. A deep bathtub invites long soaking in your expansive bathroom. Cosy up on comfortable outdoor sofas to watch the sunset streak the sky.



### 11. Two Bedroom Presidential Beachfront Pool Villa

- 1 unit with 230 sqm including pool
- 5 Adults or 4 Adults with 1 Child
- Pool Size 4 x 8.65 x 1.30

Redefining the luxury of island living, these magnificent newly refurbished beachfront residences are ideal for large groups and families. The roomy living and sleeping spaces allow for play, entertaining and idyllic holiday moments. Your sizable infinity pool offers ample space to take a dip. Just steps from the ocean's edge, this stunning accommodation contains a private steam room and Whirlpool for more blissful relaxation beside the sea.



### **Pet Policy:**

Our hotel policy is not allowed any pets in the hotel's area and in all room categories.





### **Guest Room Facilities & Features:**

- Air conditioner
- Beach Bag
- Electronic safety box
- King size bed or Twin beds
- Hot & cold shower- Bathtub
- Coffee & tea making facilities
- TV (Local & International Channels)
- Bedroom slippers & outdoor sandals
- Telephone (Local & International Calls)
- Minibar
- Day Bed
- Hair dryer
- Bathrobe
- Working Desk (All room types except Deluxe Bungalow)
- Coffee Machine (Premier Bungalow and upper room types)
- Private Stream Room (only Beachfront Pool Villa)

### **Welcome & Complimentary:**

Every confirm booking will be welcome by our traditional standard offering

- Complimentary welcome drink and cold towel
- Complimentary nightly turn down (only Pool Villas' categories)
- Complimentary welcome fruit platter / basket

### **Hotel Outlets and Facilities:**

#### ***Sea Wrap Beachfront Restaurant***

Our award winning restaurant serves up Thai & Western cuisines. Best ambiance on the property with ocean view and special occasions with BBQ seafood dining on the beach.

Outlet opening time:

Breakfast : 07:00 hrs. – 10:30 hrs.  
All Day Dining : 11:00 hrs. – 23:00 hrs.

#### ***Talay Bar***

Our outdoor bar facing the pool and beach offers some very cool refreshing cocktails and cold beverages for all. Whether you are relaxing under the sun or to watch a game of sports or having your own time at the sundeck, just walk on down to "Talay Bar" and enjoy.

Outlet opening time:

Monday - Sunday : 10:00 hrs. – 23:00 hrs.

#### ***Room Service***

Dine in at your own convenience in your room and order up your favorite dishes from our all day dining menu.

Opening time:

Monday – Sunday : 11:00hrs – 22:00hrs





### **Swimming Pool**

One of the largest free-form swimming pool along Bophut beach. The poolside area has a generous number of sun lounges for our guests' convenience. There is also a small adult Jacuzzi corner by the pool for those who need more pampering and relaxation. Beach towel will be provide free of charge near the swimming pool.

Opening time:

Monday - Sunday : 07:00hrs – 19:00hrs

### **Children Pool**

Kids can enjoy our small pool with a depth of 60 cm for their own fun under the sun as well. Parental supervision is advised at all times.

Opening time:

Monday - Sunday : 07:00hrs – 19:00hrs

### **Kids Outdoor playground**

Just beside the pool and along the garden, kids can enjoy our playground that consists of swing rides and the mini writing tables and chairs. Parental supervision is advised at all times.

Opening time:

Monday - Sunday : All day

### **Kids Playroom**

This is an indoor facility equipped with toys and rides for kids and toddlers. Playroom is covered with foam matts for the safety and comfort while having fun. Parental supervision is advised at all times.

Opening time:

Monday - Sunday : 07:00hrs – 20:00hrs

### **Peace Gym & Fitness Centre**

Our very latest addition to Peace Resort for those who like to keep up with their healthy lifestyle during their holidays.

Opening time:

Monday - Sunday : 07:00hrs – 20:00hrs

### **Peace Culinary and Cooking Class**

Our great chefs will on hand to give a lesson and cooking tips for that tasty Thai cuisine. Special classes can be pre-booked at the Front Office and get ready to be a certified chef for the day.

Opening time : One day booking in advance

### **Peace Meeting Rooms**

For corporate companies that wish to have a small meeting session can now do so at Peace Resort. Our meeting room can handle up to 30 – 50 meeting guests for each session. For further inquiry, kindly write in to [sm@peaceresort.com](mailto:sm@peaceresort.com) or ask for assistance at our Front Office.

Opening time : By booking only

### **Games Room**

An indoor facility equipped with table tennis, pool table, darts and table football

Opening time : 07:00hrs- 20:00hrs.

### **Peace Library**

A little book corner for readers with comfy sofas. This corner is filled with old and new fiction/non-fiction books, magazines and daily newspapers both local and English.

Opening time:

Monday - Sunday : 06:00hrs – 22:00hrs

### **Little Hand Gallery**

Get an amenity you like or even a special gift that are unique and can only be found at Peace Resort for your friends and loved ones at home.

Opening time:

Monday - Sunday : 24hrs

### **Other Services:**

- 24 Hours Security
- 24 Hours Reception
- Laundry Service
- Car and Motorbike rental
- Car Parking
- Indoor and Outdoor Thai Massage Centre
- Taxi & Transfer service

### **Credit Cards accepted:**

- Visa Card / Master Card / JCB / and Union Pay

### **Currency accepted:**

- Thai Baht / THB

### **Places to go & to know:**

- |                               |      |                                 |         |
|-------------------------------|------|---------------------------------|---------|
| • Samui International Airport | 6 km | • Mae Nam Beach                 | 2 km    |
| • Fishermen's Village         | 1 km | • Cheong Mon Beach              | 8 km    |
| • Island Safari               | 2 km | • Chaweng Beach                 | 10 km   |
| • Big Buddha                  | 5 km | • Lamai Beach                   | 15 km   |
| • Koh Samui view point        | 8 km | • Lomphaya ferry port           | 6 km    |
| • "Hin Ta Hin Yai"            | 15km | • Koh Phangan (by speed boat)   | 45 mins |
| • Na Muang Water Falls        | 24km | • Koh Tao (by speed boat)       | 60 mins |
| • Nathorn sub district        | 16km | • Koh Nang Yuan (by speed boat) | 60 mins |
| • Seatran Ferry Port          | 16km | • AngThong Marine national park | 90 mins |



## **Contact Persons:**

### **Resort Manager**

Contact Person : Mr. Ong-art Rungsamai  
Email : [rm@peaceresort.com](mailto:rm@peaceresort.com)

### **Front Office Department:**

Contact Person : Ms. Suparat Pingjundee  
Title : Assistant Front Office Manager  
Email : [fo@peaceresort.com](mailto:fo@peaceresort.com)

### **Sales & Marketing Department:**

Contact Person : Mr. Christian Kluding  
Title : Director of Sales  
Email : [dos@peaceresort.com](mailto:dos@peaceresort.com)

Contact Person : Ms. Sawita Dieophanit  
Title : Sales Manager  
Email : [sm@peaceresort.com](mailto:sm@peaceresort.com)

Contact Person : Ms. Chompoonut Punfujinda  
Title : Asst. Sales Manager  
Email : [sales@peaceresort.com](mailto:sales@peaceresort.com)

### **Reservation and Revenue Department:**

Contact Person : Mrs. Duangta Pullawat  
Title : Revenue and Yield Manager  
Email : [revmgr@peaceresort.com](mailto:revmgr@peaceresort.com) ; [info@peaceresort.com](mailto:info@peaceresort.com)

### **Accounting Department:**

Contact Person : Ms. Tippawan Sarachart  
Title : Accounting Manager  
Email : [finance@peaceresort.com](mailto:finance@peaceresort.com) , [account@peaceresort.com](mailto:account@peaceresort.com)

## **Hotel Address:**

178 Moo 1, Bophut Beach, Koh Samui, Suratthani 84320 THAILAND

Tel : +66 (0)77 425 357  
Fax : +66 (0)77 430 303  
Website : [www.peaceresort.com](http://www.peaceresort.com)  
Email : [info@peaceresort.com](mailto:info@peaceresort.com)  
Line ID : @peaceresortsamui  
Facebook : Peace Resort Samui